

TECHNICAL DATA

ENCLOSURE :-
EX-d AS PER IS/IEC 60079-1:2007

PROTECTION :-
IP-66 AS PER IS/IEC 60529:2001

AREA CLASSIFICATION :-
ZONE -1 & 2

GAS GROUPS :-
IIB

MATERIAL OF CONSTRUCTION :-
CAST AL ALLOY LM-6

HARDWARE :-
STEEL ZINC PLATED/STAINLESS STEEL

FINISH :-
LIGHT GREY POWDER COATED

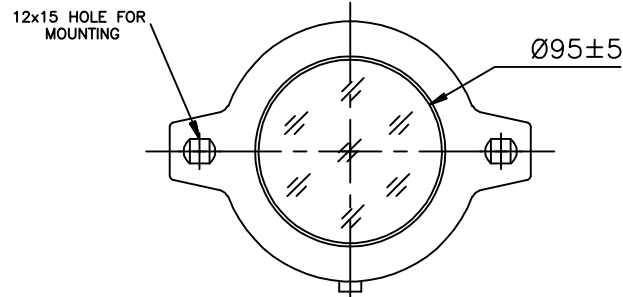
EARTHING :-
1 NO. INSIDE & 2 NOS. OUTSIDE

CABLE ENTRY :-
3/4"ET - 02NOS.

NO.	DESCRIPTION	QTY	MAT./RATING
09.	WIRE BUSH	1	GLASSFEEL NYLONE
08.	GASKET (ENDLESS, MOULDED)	2	NEOPRENE
07.	GLASS (TYPE-A)	1	TOUGHENED
06.	SWITCH (ON-OFF)	1	16A. DP 250V AC
05.	LAMP HOLDER (E-27)	1	PROCELAIN
04.	GLASS RETAINING RING	1	CAST AL. ALLOY
03.	COVER	1	CAST AL. ALLOY
02.	TERMINAL BODY	1	CAST AL. ALLOY
01.	BODY	1	CAST AL. ALLOY

DESCRIPTION

SL. NO.	230V AC LAMP WITH RATING	TEMP. CLASS
01.	100W G.L.S	T4
02.	20W CFL/PL	T6
03.	10W LED	T6



ISSUE	DATE	BY	MODIFICATION	CLIENT	CONSULTANT	P.O.No.	DRAWN	CH'D	APP'D	DESCRIPTION:-	SHT.NO.	REV.	DRG.NO.:-
							MBP	MBP	MBP	FLAMEPROOF WEATHERPROOF REACTOR VESSEL LAMP FITTING WITH TIMER	1	0	A08
											1	0	